

County Engineer
Environmental Engineer
Building Department
233 W. Sixth Street
Marysville, Ohio 43040
P 937.645.3018
F 937.645.3161
www.co.union.oh.us/engineer

Marysville Operations Facility
16400 County Home Road
Marysville, Ohio 43040
P 937.645.3017
F 937.645.3111

Richwood Outpost
190 Beatty Avenue
Richwood, Ohio 43344

ADDENDUM #4

FROM: Union County Engineers Office
Emily Wieringa

DATE: March 3, 2010

RE: **UNI-TR99-0.24 Bridge Replacement**

PAGES (including cover): 12

This addendum supplements and amends the original Drawings and Specification issued and shall be taken into account in preparing proposals, and shall become a part of the Contract Documents.

1. The bid date shall be extended from Thursday, March 4, 2010 to **Thursday, March 11, 2010 at 11:00 a.m., local time** in the office of the Board of Commissioners of Union County located in the County Office Building, 233 W. Sixth Street, Marysville, OH 43040. The proposals will be opened and read aloud at 11:30 a.m. on the same date.
2. Replace Proposal Form with the proposal form attached herein with the following revisions:
 - All Items 521 were revised to Item 530 references
 - Item 611 was revised from T=13" to T=12"
 - Added Reference 58a: Item 512: Type 2 Membrane Waterproofing
 - Reference Pavement Section: Revised and added asphalt concrete items and quantities (revised details are provided herein this addendum)
 - Reference Bridge Substructure: Revised asphalt concrete item descriptions
3. Q: The deck and bearing seat and top of back wall is shown at a constant elevation. Should these be sloped to match the crown in the bridge deck and approach slab?

A: Yes the deck bearing seat and top of the backwall shall be sloped at 0.0156. Revise the approach slab section on sheet 3/35 from 0.0083 to 0.0156. Revise the bridge deck crown on sheet 25/35 from 0.0083 to 0.0156

4. Q: The Bridge Timber Summary Table on sheet 22/35 has 3-1/8" x 9-5/8" Glulam Gable Truss Blocking noted. Can you clarify where this is required?

A: This item is located along the lower chord of the gable end roof trusses in the same plane as the diagonals. Its purpose is to provide a surface flush with that of the diagonals for the ease of installation of the gable end siding.

5. Q: The Bridge Timber Summary table on sheet 22/35 shows 4"x4" end framing girts. Should those be 2"x4" or 2"x3" or both – see Detail B on sheet 23/35?

A: Keep the dimensions consistently 2"x4".

6. Q: All of the tongue and groove siding shown on the Bridge Timber Summary Table is nominal 2" thick material. Sheet 23/35 shows some nominal 1" thick at the gable ends in section A-A on the truss verticals on sheet 25/35 show 3/4" thick material at the verticals. Are we correct to assume that all of the T&G siding is nominal 2" thick material?

A: T&G wrap for verticals shall be 1" nominal thickness, while the balance of the siding shall be 2" nominal thickness.

7. Q: Section A-A on sheet 23/35 shows cedar plans on the end framing vertical, but they are not shown in the Bridge Timber Summary Table. Please clarify this item.

A: Siding around vertical truss elements shall be cedar. All other siding may be southern pine, douglas fir, or yellow poplar. Refer to the timber summary table on sheet 22/35 for grade and finish details.

8. Q: Section A-A on sheet 23/35 shows the end framing verticals to be 3-1/2"x11" and they are shown in the Bridge Timber Summary Table as glulam. On sheet 26/35 they are shown as 4"x12" solid sawn. Please clarify.

A: Use 4"x12" solid sawn

9. Q: Are the trim boards at the top on the sides of the bridge 1"x16" or 1"x12"? Both sizes are shown on sheet 23/35.

A: The top trim board should be 1"x16". The bottom trim board should be 1"x12".

10. Q: There are conflicting out-out dimensions shown for the floor planks. The sum of the dimensions shown in the leader note is 27' - 3-1/4", but the dimensions shows 26' - 11-1/4".

A: 27' - 3-1/4" is the correct dimension

11. Q: Do the oak bearing blocks need to be shop fabricated before CCA treatment?
A: Yes, anything that is treated should be drilled prior to treatment so the holes are not susceptible to rot.
12. Q: Are holes for the roof truss gusset plates to be shop drilled?
A: Yes
13. Q: Can you provide embedment details for the end post framing verticals?
A: See detail attached herein this addendum
14. Q: Can the anchor bolts for the sway bracing be drilled & epoxy grouted or do they have to be cast in place?
A: Drilled and epoxy grouted is acceptable
15. Reference Item 512 – Type 2 Waterproofing Membrane: The product data sheet for Geotac material made by Crafcoc Inc. is found herein this addendum. This project will require that the waterproofing material match the specification conformance of the Geotac product data sheet.
16. Reference Item 514 – Field Painting: Anti-Graffiti: The specification information for this project is provided in this addendum. Product must be match the specifications herein or be an approved equal.
17. Reference sheet 22/35: Replace Timber Bridge Summary Table in its entirety with the one included herein this addendum.
18. Reference sheet 16/35: Change Item 448 Asphalt Intermediate Course from Type 2 to Type 1
19. Reference sheet 3/35: Replace sheet in its entirety with the sheet 3/35 attached herein this addendum.
20. Reference sheet 6/35: Replace sheet in its entirety with the sheet 6/35 attached herein this addendum.

Please note and sign the bottom portion of 6.6 in the bid packet proposal acknowledging that this Addendum was received.

UNI-TR 99 - 0.24 Bridge Replacement Proposal

TO: Board of Commissioners, Union County, Ohio
 PROJECT: UNI-TR99 - 0.24 BRIDGE REPLACEMENT

The undersigned, having full knowledge of the site(s) of the Project, the specifications applicable to the Project, and the conditions of this Proposal hereby agrees to furnish all services, labor, materials and equipment necessary to complete the Project in accordance with the Plans and Detailed Specifications, within the time specified for completion and to accept payment in accordance with the unit prices stated below as full compensation for all furnished services, labor, material & equipment.

REF#	ITEM	ITEM DESCRIPTION	UNIT	QUANTITY	UNIT PRICE BID	BID AMOUNT
ROADWAY						
1	201	CLEARING AND GRUBBING	LUMP	1		
2	202	GUARDRAIL REMOVAL	LIN FT	559		
3	202	FENCE REMOVED	LIN FT	165		
4	203	EXCAVATION NOT INCLUDING EMBANKMENT CONSTRUCTION	CU YD	337		
5	203	EMBANKMENT	CU YD	656		
6	203	SUBGRADE COMPACTION	SQ YD	589		
7	304	6" AGGREGATE BASE	CU YD	11		
8	606	GUARDRAIL TYPE 5	LIN FT	375		
9	606	ANCHOR ASSEMBLY, TYPE A	EACH	3		
10	606	ANCHOR ASSEMBLY, TYPE T	EACH	1		
11	606	BRIDGE TERMINAL ASSEMBLY, TYPE 4, AS PER PLAN	EACH	4		
			subtotal			
TRAFFIC CONTROL						
12	626	BARRIER REFLECTOR, TYPE A2	EACH	13		
13	630	REMOVAL OF GROUND MOUNTED SIGN AND STORAGE	EACH	7		
14	630	SIGN, FLAT SHEET, TYPE F, AS PER PLAN	SQ FT	6.25		
15	630	GROUND MOUNTED SUPPORT, NO. 3 POST	LIN FT	14		
16	642	EDGE LINE, TYPE-2 TYPE 1	MILE	0.16		
17	642	CENTER LINE, TYPE-2 TYPE 1	MILE	0.08		
18	614	TEMPORARY CENTERLINE, CLASS II	MILE	0.16		
19	614	AMERICAN RECOVERY AND REINVESTMENT ACT (ARRA) SIGN; CONVENTIONAL ROAD	EACH	2		
			subtotal			
EROSION CONTROL						
20	601	ROCK CHANNEL PROTECTION, TYPE D	CU YD	82		
21	832	CONSTRUCTION SEEDING AND MULCHING	SQ YD	1000		
22	832	PERIMETER FILTER FABRIC FENCE	LIN FT	1000		
23	832	FILTER FABRIC DITCH CHECK	LIN FT	20		
24	832	STORM WATER POLLUTION PREVENTION PLAN	EACH	1		
25	870	SEEDING AND MULCHING	SQ YD	2088		
26	870	COMMERCIAL FERTILIZER	TON	0.19		
27	870	WATER	M GAL	6		
			subtotal			

REF#	ITEM	ITEM DESCRIPTION	UNIT	QUANTITY	UNIT PRICE BID	BID AMOUNT
		PAVEMENT				
28	302	BITUMINOUS AGGREGATE BASE, PG 64-22	CU YD	78		
29	304	AGGREGATE BASE	CU YD	70		
30	407	TACK COAT FOR INTERMEDIATE COURSE	GAL	74		
31	408	BITUMINOUS PRIME COAT	GAL	187		
32	448	1-3/4" ASPHALT CONCRETE INTERMEDIATE COURSE, TYPE 2, PG 64-22	CU YD	21		
32a	448	1-1/2" ASPHALT CONCRETE INTERMEDIATE COURSE, TYPE 1, PG 64-22	CU YD	4		
33	448	1-1/2" ASPHALT CONCRETE SURFACE COURSE, TYPE 1, PG 64-22	CU YD	22		
34	603	6" CONDUIT, TYPE B	LIN FT	50		
35	603	6" CONDUIT, TYPE E	LIN FT	50		
36	603	6" CONDUIT, TYPE F	LIN FT	50		
37	605	AGGREGATE DRAINS	LIN FT	125		
38	611	REINFORCED CONCRETE APPROACH SLAB (T=13") (T-12")	SQ YD	94		
39	614	MAINTAINING TRAFFIC	LUMP	1		
40	616	WATER	M GAL	6		
41	616	CALCIUM CHLORIDE	TON	1		
42	617	AGGREGATE SHOULDERS	CU YD	51		
			subtotal			
		BRIDGE SUPERSTRUCTURE				
43	513	STRUCTURAL STEEL: MISC PLATES, RODS, ASSEMBLIES	LB	56121		
44	513	STRUCTURAL STEEL: MISC HARDWARE	LUMP	1		
45	514	FIELD PAINTING, MISC: STAINING OF SIDING AND TRIM	SQ FT	8775		
46	514	FIELD PAINTING, MISC: ANTI-GRAFFITI	SQ FT	8775		
47	530	BRIDGE TIMBER, MISC: PRATT TRUSSES, GLULAM	MFBM	32.76		
48	530	BRIDGE TIMBER, MISC: FLOOR SYSTEM, GLULAM	MFBM	57.09		
49	530	BRIDGE TIMBER, MISC: ROOF SYSTEM, GLULAM	MFBM	14.81		
50	530	BRIDGE TIMBER, MISC: PRATT TRUSSES, MISC	MFBM	2.4		
51	530	BRIDGE TIMBER, MISC: FLOOR SYSTEM, MISC	MFBM	1.97		
52	530	BRIDGE TIMBER, MISC: ROOF SYSTEM, MISC	MFBM	4.26		
53	530	BRIDGE TIMBER, MISC: SIDING, TRIM AND AWNING	SQFT	5803		
54	530	BRIDGE TIMBER, MISC: BEARING BLOCKS	LUMP	1		
55	530	SPECIAL-STRUCTURE: METAL ROOFING	SQ FT	6857		
56	530	SPECIAL-MISC: BRIDGE SIGNAGE	LUMP	1		
			subtotal			

REF#	ITEM	ITEM DESCRIPTION	UNIT	QUANTITY	UNIT PRICE BID	BID AMOUNT
		BRIDGE SUBSTRUCTURE				
57	448	1-1/2" ASPHALT CONCRETE INTERMEDIATE COURSE, TYPE 1, PG 64-22	CU YD	16		
58	448	1-1/2" ASPHALT CONCRETE SURFACE COURSE, TYPE 1, PG 64-22	CU YD	16		
58a	512	TYPE 2 MEMBRANE WATERPROOFING	SQ YD	368		
59	503	UNCLASSIFIED EXCAVATION, AS PER PLAN	LUMP	1		
60	509	EPOXY REINFORCING STEEL	LB	14337		
61	511	CLASS C, CONCRETE ABUTMENT, INCLUDING FOOTING	CU YD	194		
62	516	1" PREFORMED EXPANSION JOINT FILLER	SQ FT	52		
63	518	POROUS BACKFILL WITH FILTER FABRIC	LUMP	1		
64	518	6" PERFORATED CORRUGATED PLASTIC PIPE	LIN FT	116		
65	518	6" NON-PERFORATED CORRUGATED PLASTIC PIPE, INCL SPECIALS	LIN FT	70		
66	864	SEALING OF CONCRETE SURFACES (EPOXY-URETHANE)	SQ YD	104		
67	Special	SAWING AND SEALING BITUMINOUS CONCRETE JOINTS	LIN FT	52		
68	524	DRILLED SHAFTS, 36" DIAMETER, ABOVE BEDROCK	LIN FT	56		
69	524	DRILLED SHAFTS, 36" DIAMETER, INTO BEDROCK	LIN FT	60		
			subtotal			
70	202	STRUCTURE REMOVED, OVER 20 FOOT SPAN	LUMP	1		
71	601	DUMPED ROCK FILL, TYPE D, AS PER PLAN	CU YD	300		
72	623	CONSTRUCTION LAYOUT STAKES	LUMP	1		
73	624	MOBILIZATION	LUMP	1		
74	806	FIELD OFFICE, TYPE A	MONTH	9		
75	SPECIAL	CONSTRUCTION SCHEDULE	LUMP	1		
76	SPECIAL	PERFORMANCE AND PAYMENT BOND	LUMP	1		

TOTAL AMOUNT OF BID FOR TR99 BRIDGE REPLACEMENT



PRODUCT DATA SHEET

GEOTAC

PART NO. 33215, 33217, 33219, 33220, 33222

OCTOBER 2009

420 N. Roosevelt Ave. • Chandler AZ 85226
1-800-528-8242 • (602) 276-0406 • FAX (480) 961-0513
www.crafco.com

READ BEFORE USING THIS PRODUCT

GENERAL GeoTac is a peel-and-stick waterproofing membrane that is used in paving, bridge decks, waterproofing and other construction applications where moisture barriers are required. GeoTac is composed of a specially designed polymer modified asphalt waterproofing membrane adhesive that is bonded to a non-woven polypropylene fabric backing. GeoTac is supplied in several widths and is wound in rolls with a removable disposable release liner covering the adhesive. The adhesive layer strongly adheres to most surfaces and provides a highly effective moisture barrier. The non-woven fabric backing provides a non-adhesive, flexible, tough and durable surface that protects the waterproofing adhesive layer from subsequent paving or other construction operations. To use, GeoTac is simply removed from box, unrolled onto prepared surfaces while removing the release liner, and then pressure rolled to secure in place. GeoTac is ideally suited for various waterproofing applications including highways, bridge decks, pavement cracks and joints, parking garages and deck surfaces prior to placement of asphalt concrete overlays or other surfacing types. The GeoTac fabric backing is resistant to asphalt concrete pavement overlay temperatures up to 300°F (149°C), and hot-applied sealing mastic application temperatures up to 350F (177C).

SPECIFICATION CONFORMANCE GeoTac meets specification requirements of most state highway departments for waterproofing membranes for pavements or bridges. The specification for GeoTac is as follows:

Table with 3 columns: Property*, Test Method, Requirement. Rows include Thickness, Grab Tensile Strength, Elongation, Puncture Resistance, Permeability, and Pliability.

*Note: Sampling in accordance with ASTM D146

INSTALLATION PROCEDURE Prior to use, the user must read and follow Installation Instructions for GeoTac and GeoTac HS to verify proper product selection, surface preparation procedures, installation methods, usage precautions and safety procedures. These instructions are provided with each pallet of GeoTac.

PACKAGING GeoTac is produced in roll widths from 12" to 48" (.305 to 1.22m). Each roll is packaged in a box and the boxes are palletized on 40" x 48" (1.02m x 1.22m) pallets. GeoTac is available in the following widths and lengths.

Table with 8 columns: Part Number, Roll Width In / m, Roll Length Ft / m, Area per Roll ft² / m², Rolls per pallet, Rolls per truck, Area per Pallet ft² / m², Weight/Pallet Lb / kg.

STORAGE GeoTac is to be stored indoors at temperatures not exceeding 120°F (49°C) and kept dry.

WARRANTY CRAFCO, Inc. warrants that CRAFCO products meet applicable ASTM, AASHTO, Federal or State specifications at time of shipment. Techniques used for the preparation and installation are beyond our control as are the use and application of the products; therefore, Crafcoc shall not be responsible for improperly applied or misused products. Remedies against Crafcoc, Inc., as agreed to by Crafcoc, are limited to replacing nonconforming product or refund (full or partial) of purchase price from Crafcoc, Inc. All claims for breach of this warranty must be made within three (3) months of the date of use or twelve (12) months from the date of delivery by Crafcoc, Inc. whichever is earlier. There shall be no other warranties expressed or implied. For optimum performance, follow Crafcoc recommendations for product installation.



ANTI-GRAFFITI COATING SYSTEM SPECIFICATIONS

TECH SPEC

The Tech-Spec Data Sheet conforms to editorial style prescribed by the Constitution Specifications Institute. The manufacturer is responsible for technical accuracy.

Graffiti Melt Coating is a zero VOC, non-toxic, biodegradable, paraffin-based emulsion. It can be removed from the surface with a hot water pressure washer or one of our non-toxic, biodegradable removers:

Gold Remover cleans Graffiti Melt from porous, unpainted surfaces such as concrete and masonry.

Eaze Away Remover cleans Graffiti Melt from baked & painted delicate surfaces.

Terminator Remover cleans Graffiti Melt from metal, some brick and painted surfaces.

PRODUCT DESCRIPTION:

Graffiti Melt is a ready-to-use, low odor, "sacrificial" coating used to protect exterior surfaces from graffiti, posters and atmospheric pollution. **Graffiti Melt** is composed of water and food grade materials, and creates a tough barrier without altering the appearance or texture of the treated surface. Once the surface is coated, graffiti can be removed with a hot water pressure washer or one of our removers and cold water. After removal, re-apply the **Graffiti Melt** to the affected area. Removal by any other means will void the **Graffiti Melt** warranty.

Note: Certain paints, inks and cleaning agents contain harsh solvents and other chemicals that can alter **Graffiti Melt** by affecting its performance or removing it from the surface altogether. Genesis Coatings makes no guarantees as to system compatibilities -- this information must be determined by applying a test patch to the appropriate substrate.

Uses:

- * Concrete
- * Brick
- * Block
- * Aggregate
- * Stucco
- * Wood
- * Buildings
- * Walls
- * Light poles
- * Bridges
- * Fences
- * Trees
- * Many other painted & unpainted surfaces.

Performance:

- * Graffiti Resistant
- * Odorless
- * Non-flammable
- * Breathable
- * Fast drying
- * Zero VOC
- * USDA Compliant
- * Solvent Free

CHARACTERISTICS:

- Color:** Clear
- Finish:** Satin
- Reduction:** None
- Curing Mechanism:** Evaporation

TECHNICAL DATA:

Resin Type: Paraffin Wax

% Solids by volume: 30%

Dry Time: (Temperature & Humidity Dependent)

@ 45°F & 75%RH @ 1 mil wet:

To Touch: 25 minutes

Tack-free & Recoat: 45 minutes

Dry Hard: 1 hour

@ 75°F & 50%RH @ 1 mil wet:

To Touch: 5 minutes

Tack-free & Recoat: 15 minutes

Dry Hard: 45 minutes

Full Cure: 24 hours

Dry Film: <1 mil

VOC: 0

Flash Point: None

pH: 9.3

Specific Gravity: 0.98 Kg/l

Flexibility: Slight

Solubility in Water: Complete

Breathable: Yes

Viscosity (D-816): 31sec @ 77°F

Odor: Light pine

EPA Compliant: Yes

CARB Compliant: Yes

SHIPPING AND PACKAGING:

Graffiti Melt Coating, Gold, Eaze Away and Terminator Removers are available in Spray Bottles, 1/5 Gallons and Polyethylene Drums as follows:

Product	22oz	1 Gal	5 Gal	55 Gal
Graffiti Melt		✓	✓	✓
Gold Remover	✓	✓		✓
Eaze Away Remover	✓	✓		✓
Terminator Remover		✓		✓

Weights & Case Requirements:

- 22oz Sprayer (12/case) 20 lbs.
- Gallon (4/case) 36 lbs.
- Five Gallon Pail 45 lbs.
- 55 Gallon Drum 465 lbs.

Shipping Classifications:

Graffiti Melt: Class 55

Eaze Away/Terminator: Class 85

STORAGE:

Graffiti Melt Coating should be stored at a temperature above 50°F. Do not allow product to freeze. Preventative measures are necessary for both transporting and storage.

Any material that has been frozen must be discarded. Containers should be shaken before used and kept closed during storage. The material will withstand storage temperatures up to 140°F, but avoid prolonged exposure to sunlight.

Graffiti Melt Coating can be stored for 18 months, unopened @ 50°F to 90°F.

LIMITATIONS:

1. Do not apply **Graffiti Melt** in high heat, wind or rain, or where rain is imminent, or where surface temperatures are below 45°F.
2. Desired surface pH level must be between 8.0 and 10.0.
3. Retaining walls, planter boxes or surfaces where water will be of concern must be waterproofed prior to applying **Graffiti Melt**.
4. Do not apply **Graffiti Melt** to horizontal or walking surfaces, as the product becomes slippery when wet.
5. **Graffiti Melt** does not promote or prevent efflorescence.
6. Rolling is not recommended on any surface due to the potential to overcoat.
7. HVAC runoff can sometimes adhere to the coating to cause streaking.

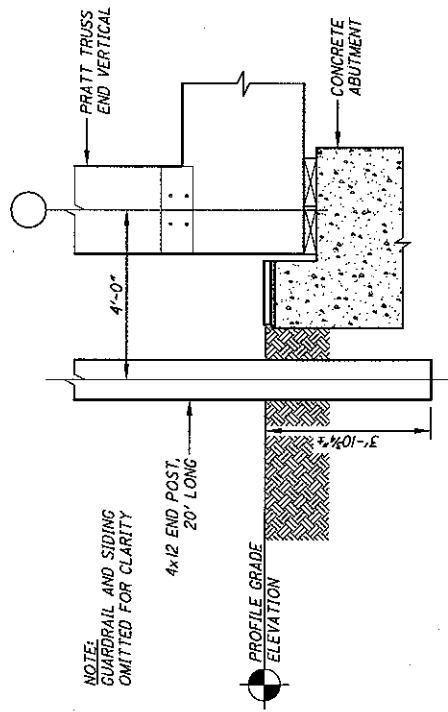
KEEP OUT OF REACH OF CHILDREN AND ANIMALS!

COVERAGE AND COMPATIBILITY:

The following coverage rates are approximate and should be used as an estimate only. Always conduct test applications on actual surfaces to accurately determine coverage rates and compatibility with existing coatings. Porosity, texture, method of application, and climate conditions can affect coverage rates:

Substrate	Sq.Ft/ Gallon	Coats
Metal	600	1
Sealed Wood & Concrete	450	1
Concrete & Painted Block	400	2
Concrete Block & Stucco	300	2
Brick	350	2

***Graffiti Melt Coating and Removers** meet all current standards of the U.S. Environmental Protection Agency as well as meets or exceeds all known EPA, OSHA, and CARB hazardous material requirements for this class of architectural coatings.



DETAIL
END POST EMBEDMENT

NTS

BRIDGE TIMBER SUMMARY TABLE

MEMBER	SIZE	PRESERVATIVE TREATMENT	GRADE	SPECIES	SURFACE FINISH	GRADING AGENCY				
PRATT TRUSSES GLULAM										
(6) LOWER CHORD	6¾" x 33"	*1,*2,*3,*5,OR*6	AITC 48	SOUTHERN PINE OR DOUGLAS FIR (16% M.C.)	GLULAM INDUSTRIAL	SOUTHERN PINE OR WEST COAST LUMBER INSPECTION BUREAU & AITC				
(6) UPPER CHORD	6¾" x 19¼"	NONE								
(12) END VERTICALS	6¾" x 23¾"	NONE								
(54) INTERMEDIATE VERTICALS	6¾" x 19¼"	NONE								
(2) GUIDERAIL	3½" x 15½"	NONE								
FLOOR SYSTEM, GLULAM										
(20) TRANSVERSE BEAMS	12¼" x VARIABLE	*1,*2,*3,*5,OR*6	AITC 26F-V4	SOUTHERN PINE OR DOUGLAS FIR (16% M.C.)	GLULAM INDUSTRIAL	SOUTHERN PINE OR WEST COAST LUMBER INSPECTION BUREAU & AITC				
(19) SPREADER BEAMS	5" x VARIABLE	*1,*2,*3,*5,OR*6	AITC 26F-V4							
FLOOR PANELS, SIZE 1	8¼" x 41 ¼"	*1,*2,*3,*5,OR*6	AITC 48							
FLOOR PANELS, SIZE 2	8¼" x 39½"	*1,*2,*3,*5,OR*6	AITC 48							
ROOF SYSTEM, GLULAM										
(46) UPPER CHORD	3½" x 13¾"	NONE	AITC 26F-V4	SOUTHERN PINE OR DOUGLAS FIR (19% M.C.)	S4S	SOUTHERN PINE OR WEST COAST LUMBER INSPECTION BUREAU & AITC				
(44) LOWER CHORD	5½" x 9½"	NONE	AITC 48							
INTERNAL MEMBERS	3½" x 6½"	NONE	AITC 48							
KNEE BRACES	3½" x 9½"	NONE	AITC 48							
GABLE TRUSS BLOCKING	3½" x 9½"	NONE	AITC 48							
PRATT TRUSSES, MISC.										
(36) LOWER KNEE BRACES	4x8 NOMINAL	*1,*2,*3,*4,OR*6	#1 AND BETTER	SOUTHERN PINE OR DOUGLAS FIR (19% M.C.)	S4S	SOUTHERN PINE OR WEST COAST LUMBER INSPECTION BUREAU & AITC				
(36) UPPER KNEE BRACES	4x8 NOMINAL	NONE								
(80) UPPER CHORD BLOCKING	4x8 NOMINAL	NONE								
(44) BLOCKING AT VERTICALS	2¾" x 12"	NONE								
(12) BLOCKING AT KNEE BRACES	4x8 NOMINAL	NONE								
(20) UPPER ARCHITECTURAL KNEE BRACES	4x8 NOMINAL	NONE								
(8) END POSTS	4x12 NOMINAL	*1,*2,*3,*5,OR*6								
FLOOR SYSTEM, MISC.										
(2) TIMBER CURB	8x8 NOMINAL	*1,*2,*3,*4,OR*6	#1 AND BETTER	SOUTHERN PINE OR DOUGLAS FIR (19% M.C.)	S4S	SOUTHERN PINE OR WEST COAST LUMBER INSPECTION BUREAU & AITC				
(86) CURB BLOCKING	2x8 NOMINAL	*1,*2,*3,*4,OR*6								
(40) FLOOR BEAM BEARING BLOCKS	4x10 NOMINAL	*1,*2,*3,*4,OR*6								
(12) CURB DRAINS	3" x 3"	*1,*2,*3,*4,OR*6								
ROOF SYSTEM, MISC.										
ROOF PURLINS	3x4 NOMINAL	NONE	#2 COMMON AND BETTER	SOUTHERN PINE, DOUGLAS FIR, YELLOW POPLAR NON-STRUCTURAL, OR OTHER APPROVED (KILN DRIED)	S4S	SOUTHERN PINE OR WEST COAST LUMBER INSPECTION BUREAU OR NATIONAL HARDWOOD LUMBER ASSOC.				
SIDING SUPPORT										
EXTERIOR SIDING GIRTS	4x4 NOMINAL	NONE								
INTERIOR SIDING GIRTS	2x4 NOMINAL									
END FRAMING GIRTS	2x4 NOMINAL									
COLUMN GIRTS	2x4 NOMINAL									
COLUMN FURRING	½" x ¾"									
END POST FRAMING	3x3 NOMINAL									
SIDING AND TRIM										
TONGUE & GROOVE (TRUSS VERTICALS)	1x4 NOMINAL	NONE	#2 COMMON AND BETTER	SOUTHERN PINE, DOUGLAS FIR, YELLOW POPLAR NON-STRUCTURAL, OR OTHER APPROVED (KILN DRIED)	S4S	SOUTHERN PINE OR WEST COAST LUMBER INSPECTION BUREAU OR NATIONAL HARDWOOD LUMBER ASSOC.				
TONGUE & GROOVE (MAIN SIDING)	2x8 NOMINAL									
TRIM BOARDS	VARIES									
END TRIM	2x12 NOMINAL									
FASCIA	2x12 NOMINAL									
RAKE	2x16 NOMINAL									
SILL PLATE (EXTERIOR)	2x6 NOMINAL									
SILL PLATE (INTERIOR)	2x4 NOMINAL									
BEARING BLOCKS										
TRUSS BEARING BLOCKS	3½" x 12¾"	CCA PRESSURE TREATED TO REFUSAL	#1 AND BETTER	WHITE OAK (19% M.C.)	S4S	NATIONAL HARDWOOD LUMBER ASSOC.				
FLOOR PLANK BEARING BLOCKS	3½" x 12¾"									